

This document explains the firmware update procedure for the MT300 Digital Manometer (hereafter referred to as the MT300).

When updating the firmware, be sure to follow this instruction manual.

Trademarks

- Microsoft, Windows, Windows 10, and Windows 11 are registered trademarks or trademarks of Microsoft Corporation in the United States and/or other countries.
- Adobe and Acrobat are registered trademarks or trademarks of Adobe Systems Incorporated in the United States and/or other countries.
- Other company and product names are registered trademarks or trademarks of their respective holders.
- In this manual, the ® and TM symbols do not accompany their respective registered trademark or trademark names.

Disclaimers

By downloading and installing this software, the customer agrees to all of the following disclaimers.

- Yokogawa bears no liability for any problems occurring as a result of downloading or installing this software.
- Yokogawa bears no responsibility for any damage caused directly or indirectly as a result of using this software.
- This software is provided free of charge, however no unlimited warranty against software defects exists, nor is any claim made that the product is free of all defects whatsoever. Also, Yokogawa is not always able to repair defects ("bugs") in, or respond to questions or inquiries about this software.
- Yokogawa reserves all rights to this software, including but not limited to all property rights, ownership rights, and intellectual property rights.

PC System Requirements

- Personal computer (PC)
A PC with a Core2 Duo 2 GHz or faster CPU and 1 GB or more of memory
- OS
Microsoft Windows 10 or Windows 11

Notes before Updating

Setup Parameters

When you update the firmware, the MT300 setup parameters will be reset to their factory default values. Save them if necessary.

Installing the USB Driver

Connect the MT300 to a PC with a USB cable, and update the firmware. To communicate with USB interface, you need the YOKOGAWA USB driver (YTUSB) on your PC. You can download it from our website. How to install the driver, see the manual that is downloaded together.

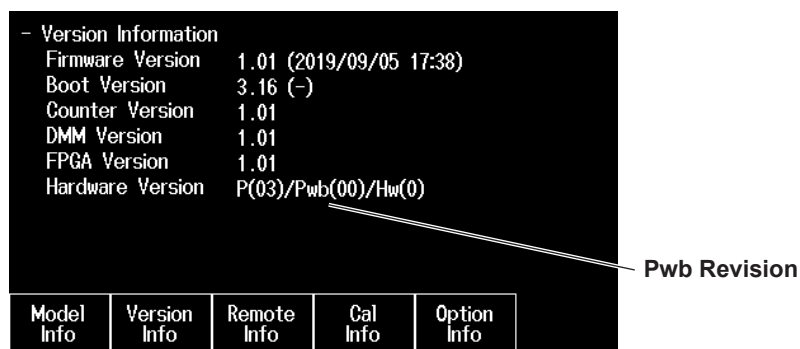
<https://tmi.yokogawa.com/library/documents-downloads/software/usb-drivers/>

Required driver: YTUSB

Checking the MT300 Hardware Version

1. On the top menu, press **MENU**, and press the soft keys in the following sequence.
Utility > Next 1/3 > Overview > Version Info
2. The following product information screen appears. You can update the firmware when the pwb revision in hardware version is Pwb(02) or less.

If the revision is Pwb(03) or more, there is no need to update. Even if you try to update, an error will appear, and you will not be able to update.



Downloading the Firmware Update Tool

Download the MT300 Firmware Update Tool from our website to a folder on your PC. You need user registration to download it.

<https://tmi.yokogawa.com/library/>

Required file: MT300 firmware

Unzip the downloaded firmware file, and check that the following files are in the folder.

- BootloaderDownloadApp.exe (update program)
- BootloaderDownloadApp.ini (configuration file)
- bootload.dll,tmctl.dll (DLL files)
- MT300.firm (the instrument's firmware data file)
- MT300UpdateIM_EN.pdf (Firmware Update Procedure (this manual))

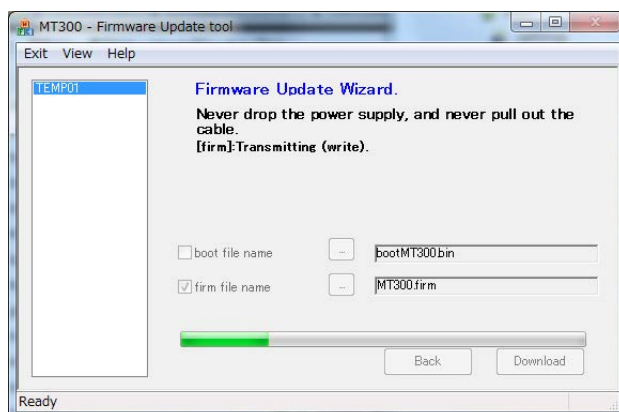
MT300 Preparation

3. Using a USB cable, connect the USB port for PCs on the rear panel to the PC.
4. While holding down the ESC key, turn on the power switch.
Hold down the ESC key until all the LEDs on the panel illuminate. The MT300 starts in firmware update mode.
5. Check that only a single MT300 running in firmware update mode is connected to the PC.

Running the Firmware Update Tool

6. In the PC Device Manager, check that the PC has detected the MT300.
7. Double-click the update program (BootloaderDownloadApp.exe) in the unzipped folder.
The firmware update tool will start and the firmware update will begin.
8. A progress bar shows the update progress.

It takes about 50 seconds for the update to complete. Do not remove the USB cable or turn off the MT300 until the update is finished. If you do, you may not be able to start the MT300.



9. When updating completes successfully, the update tool closes automatically, and the MT300 restarts automatically.

It takes about 60 seconds for the restart after updating. Wait without turning off the power for the display to change from “MT300” to the pressure display screen. If you turn off the power in the middle of the procedure, the factory default adjustment values (pressure and DMM (/DM option)) may become corrupt.

Checking the MT300 Firmware Version

10. When the pressure display screen appears, press **MENU**, and press the soft keys in the following sequence.

Utility → Next 1/3 → Overview → Version Info

11. The following product information screen appears. Check that the firmware version has been updated.

The hardware version will remain the same.

